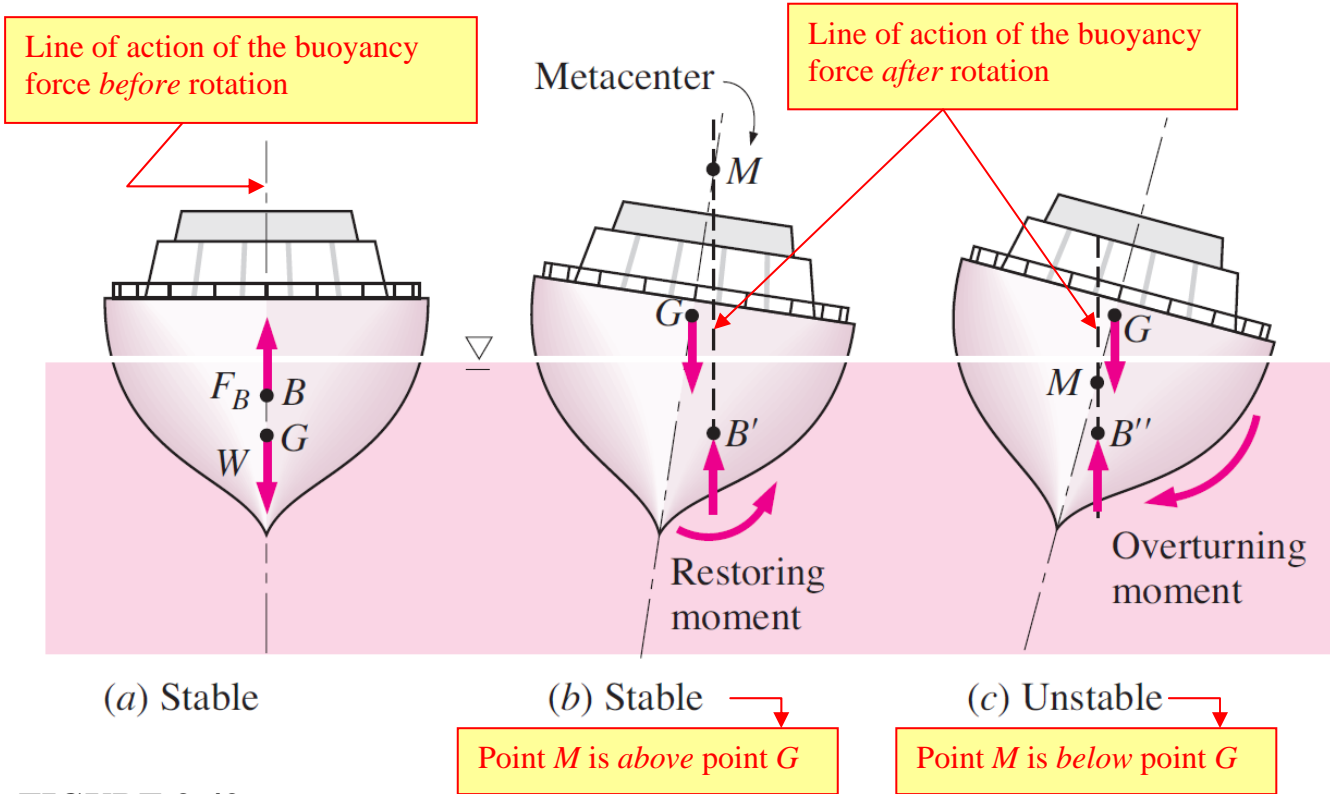


# Stability of a Boat

Author: John M. Cimbala, Penn State University  
Latest revision: 10 September 2012



**FIGURE 3-49**

A floating body is *stable* if the body is bottom-heavy and thus the center of gravity  $G$  is below the centroid  $B$  of the body, or if the metacenter  $M$  is above point  $G$ . However, the body is *unstable* if point  $M$  is below point  $G$ .

$M$  = the **metacenter** = the point where the lines of action of the buoyancy force *before* and *after* rotation intersect